

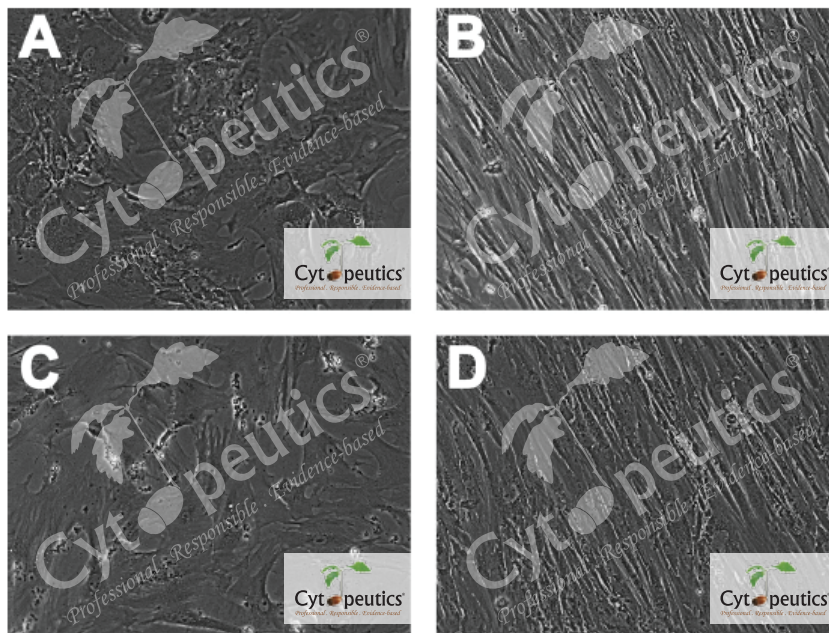
# KIDNEY DAMAGE & HYPERTENSION

## IN VITRO DIFFERENTIATION OF MESENCHYMAL STEM CELLS INTO MESANGIAL CELLS WHEN CO-CULTURED WITH INJURED MESANGIAL CELLS

Chee-Yin Wong<sup>1,2</sup>, Eng-Lai Tan<sup>3</sup>, Soon-Keng Cheong<sup>2</sup>

<sup>1</sup>Cytopeutics, Selangor, Malaysia, <sup>2</sup>Tunku Abdul Rahman University, Selangor, Malaysia, <sup>3</sup>International Medical University, Kuala Lumpur, Malaysia.

***We have shown MSC could differentiate into mesangial like cells when co-cultured with injured mesangial cells***



A) After 7 days of co-culture with injured mesangial cells MSC morphology changed to a mesangial cell-like morphology. (B) MSC co-cultured with uninjured mesangial cell did not exhibit any change in morphology (Control A). (C) Morphology of pure mesangial cells without co-culture (Control B). (D) Morphology of pure MSC without co-culture (Control C).